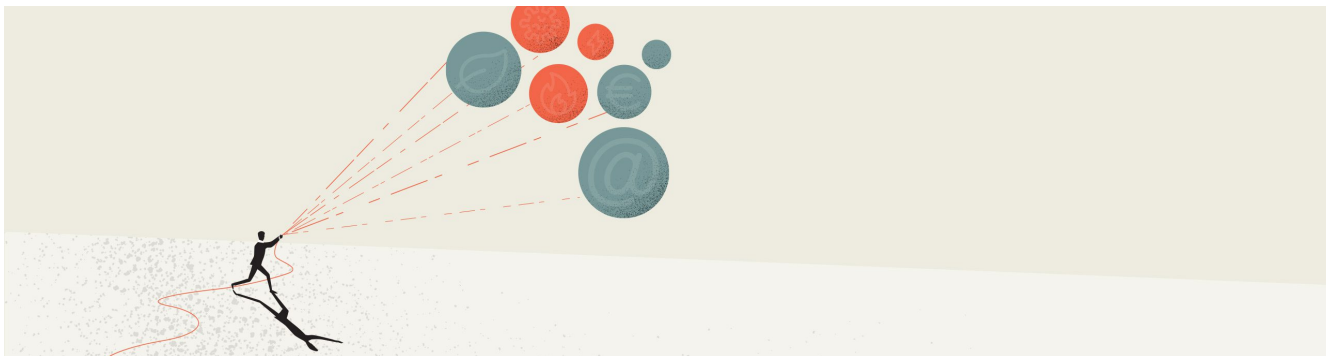


Banking in times of change

Standing strong in the new climate



September 1, 2023

Everything, everywhere, all at once. That describes the polycrisis the world is facing. *IESE Business School Insight* magazine #165 shares expertise from banking executives and IESE research on how leaders are using the tools sharpened by previous crises to confront whatever is next.

Stability and resilience are vital for dealing with the disruptions and transitions under way, not least climate change. The path from doom to boom isn't straight, but together, we can get there.

Also in this magazine: How bundling goods into a single delivery can result in fewer returns. To close pay gaps, start young. Tips for retailers to navigate inflation. Four types of work design. Fernanda Lopes Larsen is planting seeds for a better, fairer world. Polish TV news chief Roman Mlodkowski proves it need not cost a fortune to innovate. French chef and entrepreneur Christophe Chevallier transforms leftover bread into craft beer. The power of music industry collaborations. Housing wealth and deaths of despair. AI: Beyond the hype.

How social movements give renewables a boost. Three factors to boost everyone's well-being at work.

[See table of contents](#)

Array

www.iese.edu/insight